



**3 Bed**  
**House - Terraced**  
**Woodside Green**  
**South Norwood**

**Asking price**  
**£525,000**  
**Freehold**

- Character End Of Terrace Family House
- Three bedrooms
- Two reception rooms
- Superb Refitted Contemporary Kitchen With Oven & Hob
- Downstairs Refitted Designer Style Bathroom
- Good & Imaginative Order Throughout
- Double glazing
- Gas central heating system
- The Sought After Woodside Green Area
- Rear garden





Woodside Green  
South Norwood  
London  
SE25 5EU

We are delighted to present this stunning end of terrace, halls adjoining, three-bedroom character family house which we are sure will impress you. This beautiful home boasts a wealth of desirable features that will appeal to a wide range of buyers. One of the most noteworthy features are the fireplaces, adding a touch of character and warmth. This house is a credit to its present owners who have lived there for approximately 17 years, which shows how much they have enjoyed living in the house and the area in general. Benefiting from a modern refitted kitchen, perfect for preparing delicious meals, which is equipped with an oven and hob and ample storage space. The recently refitted downstairs bathroom is finished to a high standard. The décor throughout is tastefully and beautifully presented, including elegant wallpaper. The three bedrooms are generously sized, offering plenty of space for a growing family or visiting guests. The master bedroom is especially spacious, providing a haven of peace and tranquillity. Outside, the property benefits from a private and well-maintained garden, perfect for enjoying a morning coffee or hosting a summer barbecue. This stunning three-bedroom end of terrace house, with its many desirable features, is sure to attract a lot of interest, Convenient for local bus routes, the Black Horse tram stop and Norwood Junction BR overground station serves the area with its fast links into London - so don't delay - book your viewing today!

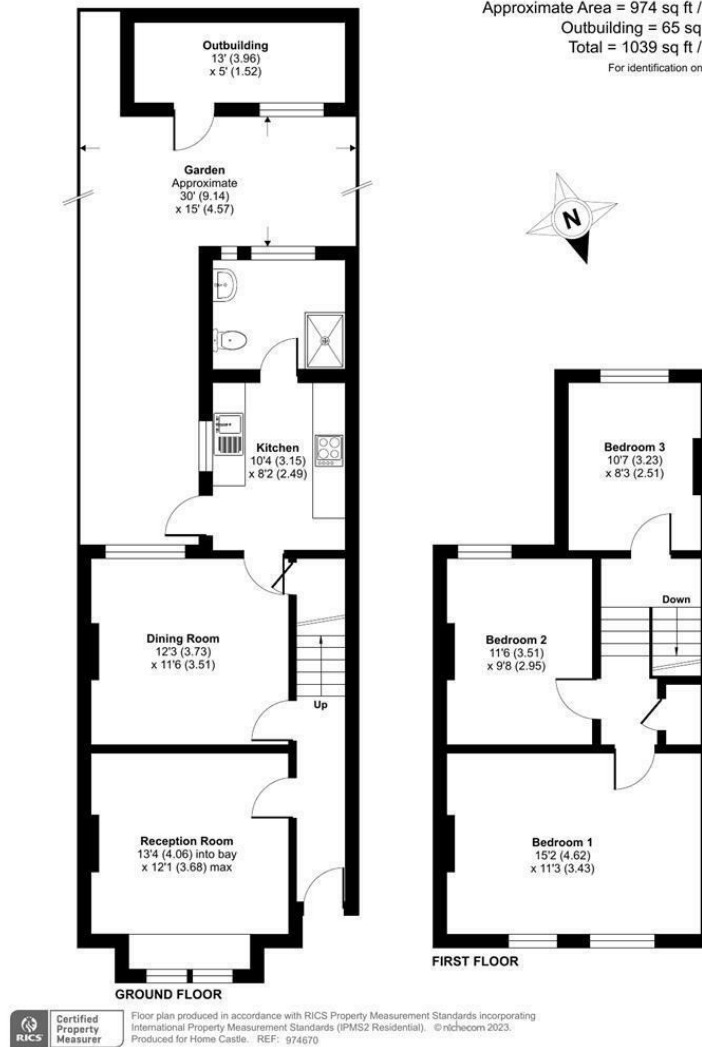






## Woodside Green, London, SE25

Approximate Area = 974 sq ft / 90.4 sq m  
 Outbuilding = 65 sq ft / 6 sq m  
 Total = 1039 sq ft / 96.4 sq m  
 For identification only - Not to scale



### CONTACT

5 High Street  
 London  
 SE25 6EP

E: [Info@northwoods.co.uk](mailto:Info@northwoods.co.uk)  
 T: 020 8653 3377  
[northwoods.co.uk](http://northwoods.co.uk)

